

# High Performance Subwoofer - digitally powered **G Sub dp**



The G Sub dp is a selfpowered high-performance subwoofer for universal applications and produces a high and undistorted low-range sound level starting at 35 Hz. The special cabinet design guarantees a long throw and low power compression. The G-Sub convinces through ideal handling characteristics and can be used both horizontally and vertically. The integrated 1500 Watt Class D amplifier electronics are controlled by a DSP with three filter presets, cardioid mode and various volume settings. For transportation, a wheel-board can be attached to the front side.

## PRODUCT SPECIFICATIONS

<b>Speaker Components</b>	18" Neodym
<b>Description</b>	High Performance Subwoofer
<b>Power</b>	1500 W EIAJ / 195-250 VAC
<b>Max Line Input</b>	+ 21 dBu
<b>DSP</b>	32 bit RISC
<b>Internal Signal Path</b>	32 bit fixed-point, 64 bit accumulator 64 bit IIR-coefficients
<b>AD / DA</b>	24 bit / 48 kHz
<b>Latency</b>	1.54 ms (analog in to analog out)
<b>SPL max</b>	138 dB
<b>Frequency Range</b>	32 Hz - 150 Hz
<b>Connectors</b>	Neutrik XLR in/out Neutrik PowerCon in/out
<b>Handles</b>	2 x 2D handle - side 1 x 2D corner handle
<b>Fittings</b>	M20 on top and side Wheelboard fittings
<b>Weight</b>	44,0 kg (dp 1500 version) 44,5 kg (dp 3000 version) +7,5 kg (wheelboard)
<b>Size</b> height x width x depth	69,8 x 51,2 x 56,0 cm
<b>Order No.</b>	<b>00600/dp1500</b>



Heavy-duty metal grille.

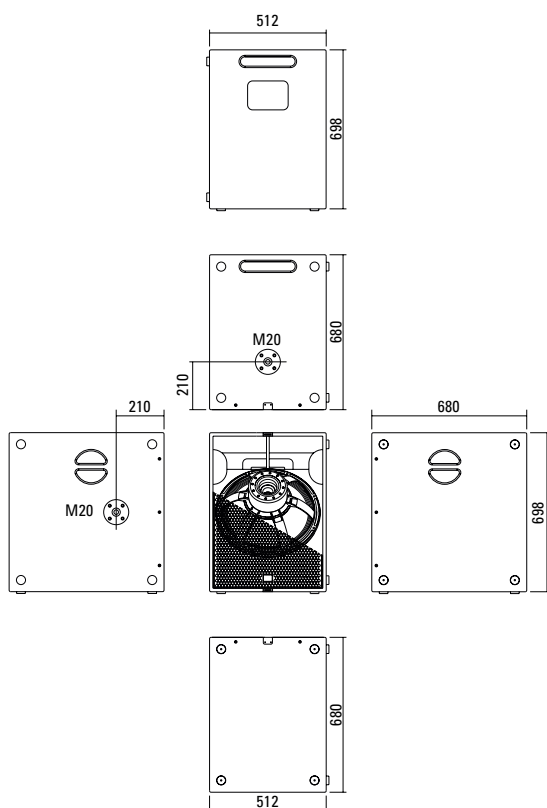


Two large bar handles for easy handling.



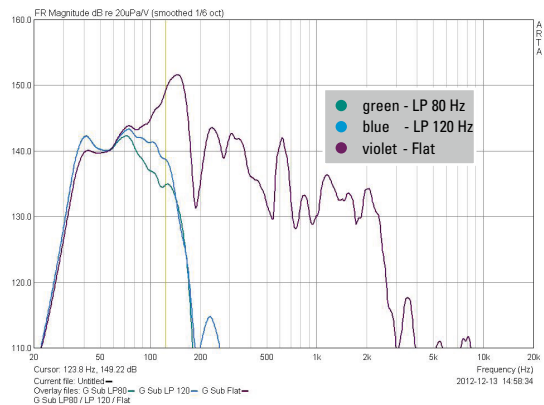
Convenient corner handle.

## DIMENSIONS

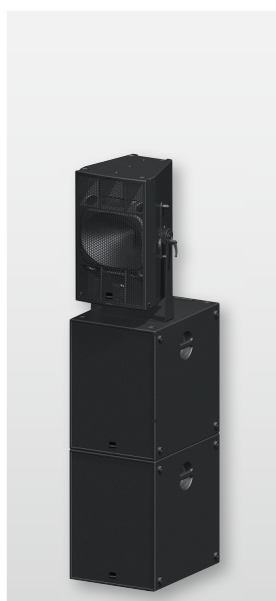


## PRESETS

### Presets - Frequency Response



## APPLICATIONS



2 x G Sub dp / K24



G Sub dp / GL 24



2 x G Sub dp / G3



2 x G Sub dp / G Sub dp  
Cardioid set-up.

**The G Sub dp features integrated digital amplifier electronics with a DSP controller. Various factory-configured presets and volume settings can be selected.**

High-grade electronic components from the industrial sector and a first-class circuit design ensure excellent audio quality with low distortion and effectively minimise static noise. Highly efficient and “intelligent” limiter systems ensure optimum protection against overload, without restricting the possibilities offered by this high-performance sound system.

#### XLR

Symmetrical analog input  
Max. Input +21dBu  
HF- and DC-filter.  
Virtual ground lift.

#### Level

Adjustment in 3 dB steps  
(-6 dB to +3 dB)

#### Mute LED

Red light when the system is muted or under technically crucial conditions.

#### Limit LED

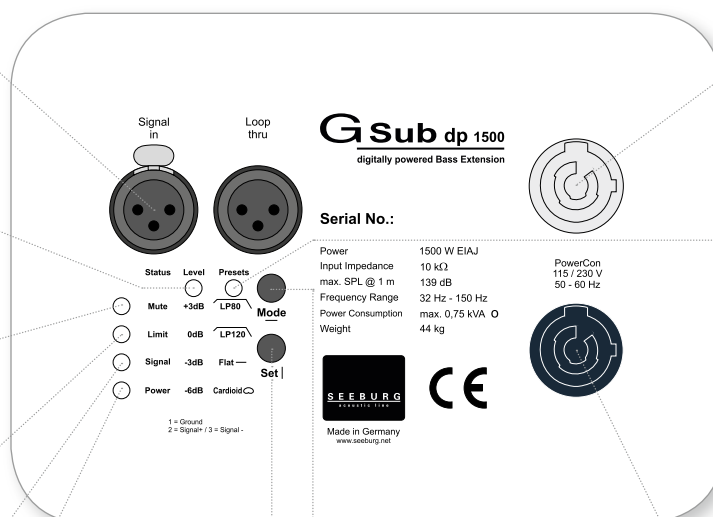
Yellow light when the limiter is restricting the level.

#### Signal LED

Green light when the input signal exceeds -20 dBu

#### Power LED

Green light when the system is switched on.



#### Set - key

Setting of various values and Mute on/off.

#### Mode - key

Changing to control modes Status / Level and Presets.

#### PowerCon (grey)

230 VAC / 16 A max.  
loop thru connector

#### Presets

##### LP 80

Low Pass filter with 80 Hz cutoff frequency.

##### LP 120

Low Pass filter with 120 Hz cutoff frequency.

##### Flat

No adjustments to the frequency response. For use with external controller.

##### Cardioidmode

Activates an allpass filter for directional dispersion when combined with a second subwoofer. For that purpose the G Sub dp 1500 needs to be aimed to the back. Depending on placement and frequency, the attenuation to the rear can be up to -20 dB.

#### PowerCon (blue)

Power supply  
195-250 VAC

## ACCESSORIES G Sub dp

### Speaker Pole

M20, with wind up, K&M  
Order No. **03023**

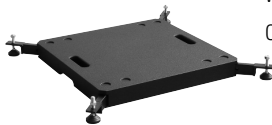


M20, adjustable, K&M  
Order No. **03022**



### Groundstacking Board

for G Sub / K Sub 1801 / TSE Sub  
with extendable legs  
Order No. **01394**



### Ceiling Mount

for Subwoofer  
Order No. **08129**



### Hybrid Cable System

PowerCon-PowerCon / XLR-XLR

2,5 m    Order No. **08462**  
5 m    Order No. **08464**  
10 m    Order No. **08466**  
15 m    Order No. **08468**



### Cover

for G Sub, padded  
Order No. **01232**



### Wheelboard

for G Sub / K Sub 1801 / TSE Sub  
Order No. **01260**

